

Parking for National History Day in New Hampshire

Lot 304 is ideal and can be accessed off Merrill Street or Langdon Street.

DO NOT park in Blue Circle lots, especially #301 on the corner of Langdon and High St.

ANY Green Triangle lot will be OK; overflow parking is across the river close to I-93, about a 10-minute walk.

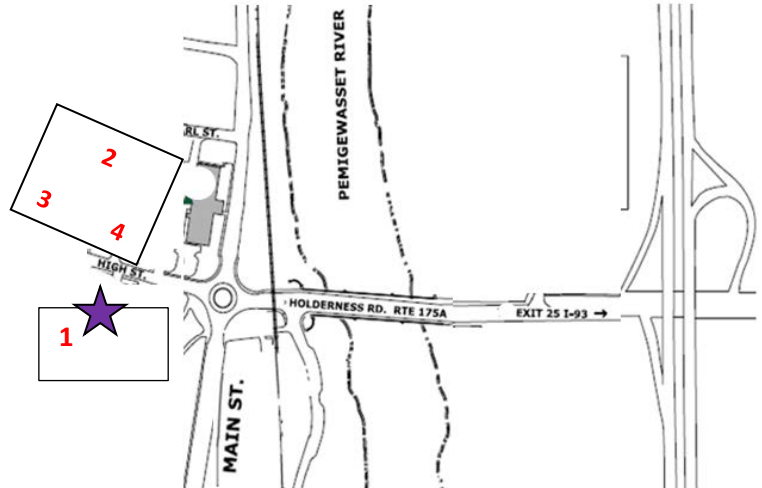
National History Day NH 2017

To Plymouth State University:

GPS: 17 High Street, Plymouth, NH 03264-1595

Take **I-93** toward **Plymouth**. (41.1 mi. north of Concord)
 Take exit **#25** for **NH-175** toward **Holderness Rd/Plymouth**
 Turn right onto **NH-175A W/State Hwy 175A W.** 0.6 mi

For parking use big lot (#3) accessible from either:
 Merrill via Main St. or Langdon via High St.
 (See parking map: Lot 304 is ideal but you may use and lot designated by a Green Triangle; overflow parking is I-93.)



Free Parking – Lots behind Hyde (#3 on map)

And across High Street

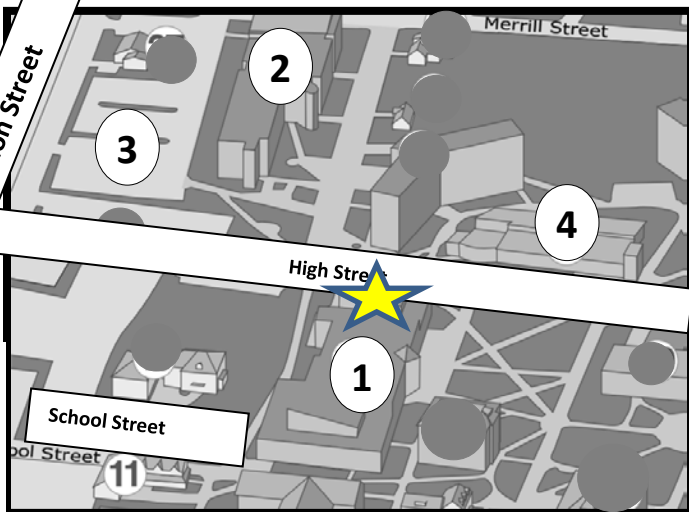
Registration - HUB (#1 on map)

Exhibits - HUB (#1 on map)

Other Categories - Hyde Hall (#2 on map)

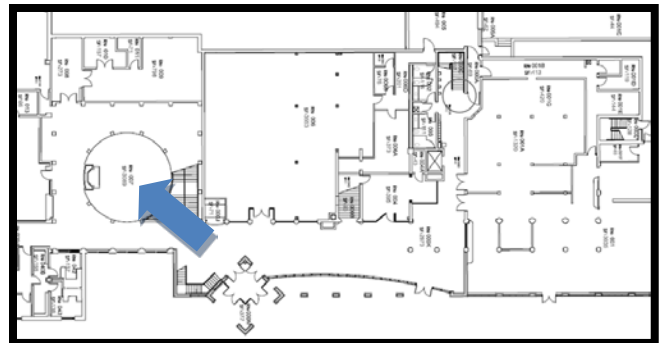
\$5 Lunch w/ coupon in registr. packet –

Prospect Dining Hall (#4 on map)



Student Registration: Fireplace Lounge: base of the main staircase on the first floor. See map below.

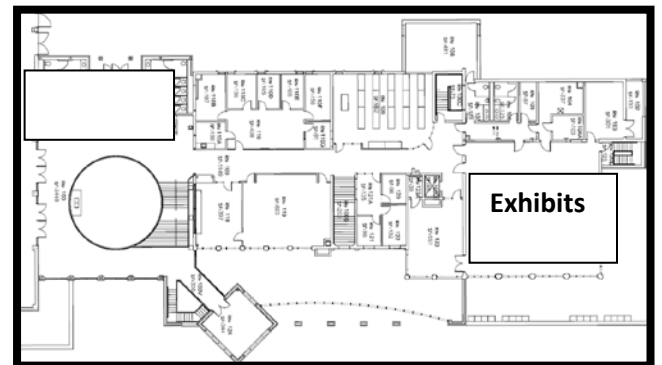
FIRST FLOOR



HUB

Exhibits:

SECOND FLOOR



DROPPING OFF ?

For **Exhibits** you may turn left just after **HUB** and off-load in middle of building; exit on School Street (to your right after leaving HUB); please don't block road – just drop off. (One way streets/closed 9-2)

For **Performance** props, use Merrill Street; no direct access from parking lot. Elevator near Merrill St. entrances

* A discounted lunch available through student registration packet; I You may do lunch off campus. Downtown probably will be busy.