

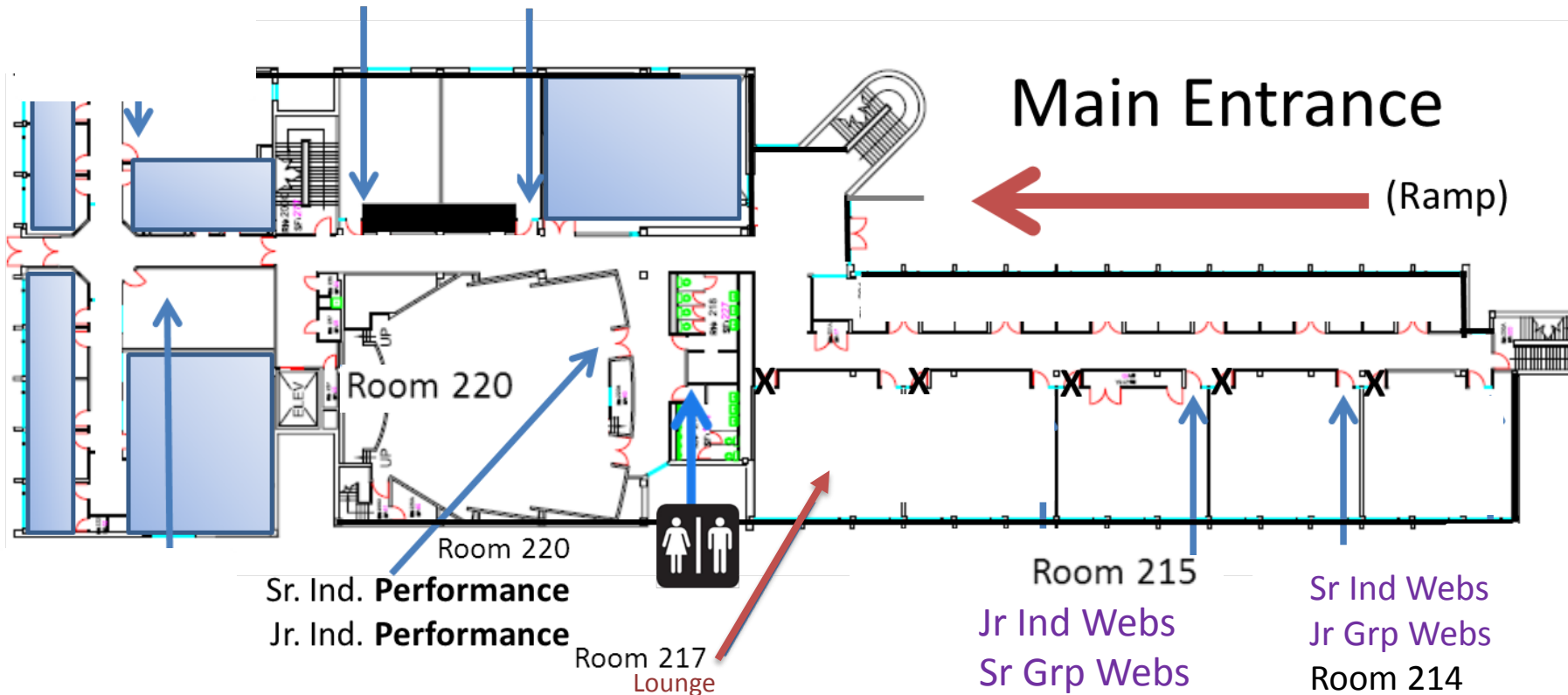
# Hyde Hall



Paper and Web Interviews are closed to the public

To the HUB/ Exhibits,  
Registration, and Awards

(Closed)  
Jr Papers Rm 233    Sr Papers Rm 234



{Parking Lot Side of Building}



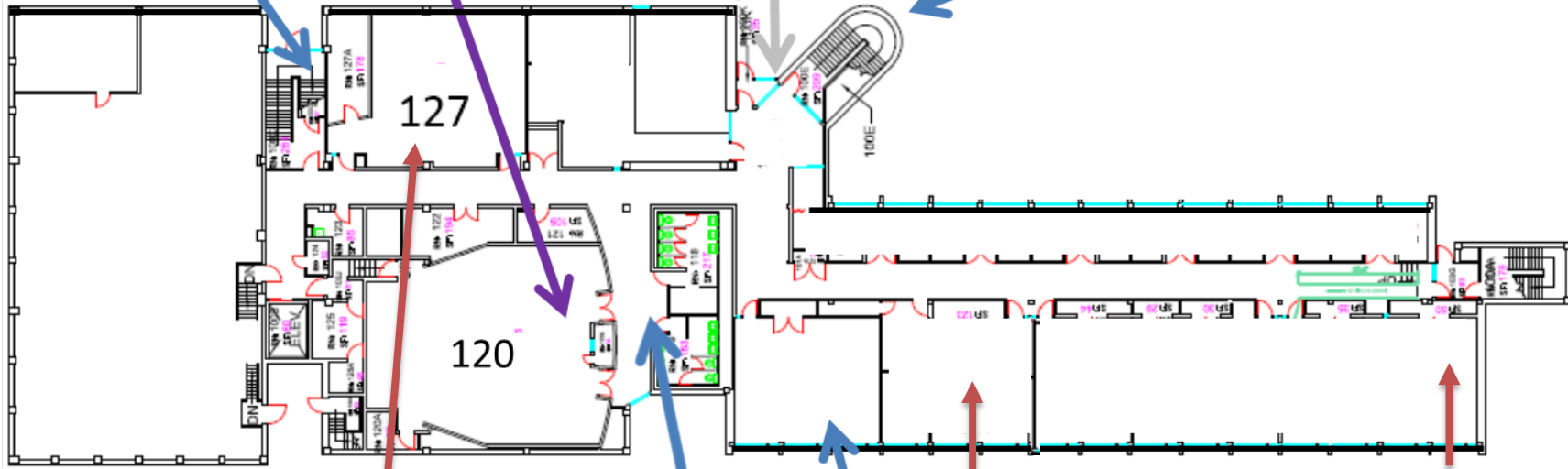
# Hyde Hall (basement)

Use Merrill Street for Dropping Off Performance Props

**Sr. Group Performances:** Rm 120  
**Jr. Group Performances:** Rm 120  
**Jr. Ind Performances:** Rm 120

Internal STAIRS from main floor

Prop Entrnc.



**Sr Ind Docs:** 127

**Jr Gp DOC:** 117

**Sr Grp Doc:** 116

**Jr Ind Doc:** 116

Computer Cluster Rm 113



**Hyde Parking Lots**

Enter Hyde from other side of Bldg.



MAIN FLOOR

# Hyde Hall

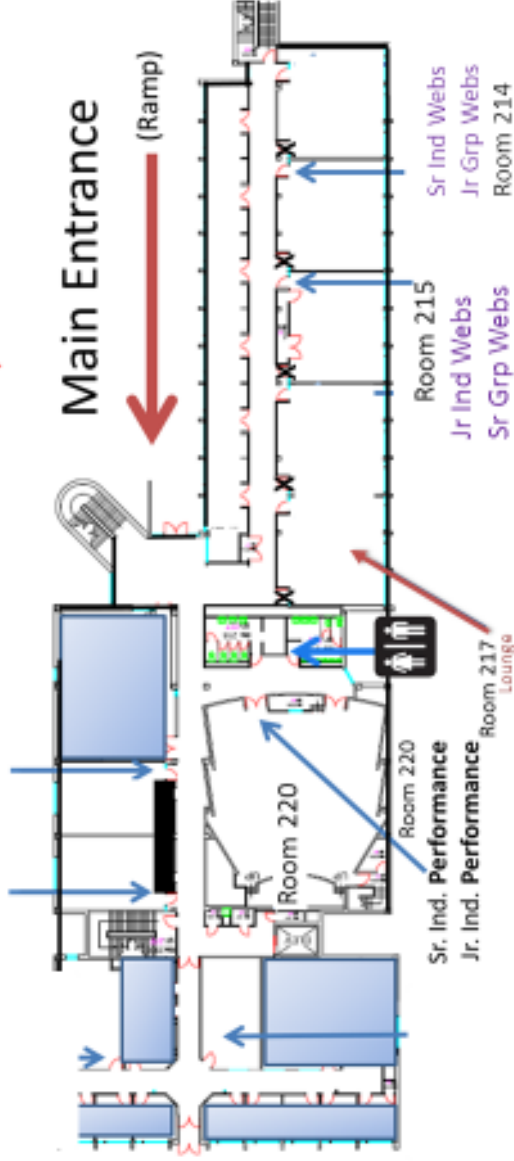
Paper and Web Interviews are closed to the public



To the HUB/ Exhibits,  
Registration and Awards

(Closed)

Jr Papers Sr Papers  
Rm 233 Rm 234



{Parking Lot Side of Building}



# Hyde Hall (basement)

Use Merrill Street for Dropping Off Performance Props



Sr. Group Performances: Rm 120  
Jr. Group Performances: Rm 120  
Jr. Ind Performances: Rm 120